

The Archaeology of Taunton



Peter Leach



Western Archaeological Trust

THE ARCHAEOLOGY OF TAUNTON

Excavations and Fieldwork
to 1980

Edited by
PETER LEACH

with contributions from

M. Aston, Justine Bayley, J. Bennett, I.C.G. Burrow, R.J.E. Bush,
R.J. Charleston, C.F. Clements, R. Coleman-Smith, J.R.A. Greig,
L. Good, F. Hawtin, J. Hinchliffe, P.J. Leach, B. Levitan, Marion Meek,
S. Minnitt, D.T. Moore, P.J. Osborne, T. Pearson, W.J. Rodwell,
Juliet Rogers, J.H. Thornton, R.F. Tylecote, L. Webster, A. Wheeler,
and B. Williams.

Western Archaeological Trust
Excavation Monograph Number 8

1984

CLAY TOBACCO-PIPES

by T. Pearson

This catalogue illustrates a representative selection of clay tobacco-pipes that were recovered from the excavations reported on in Part 1. There is a large collection of pipes in the Somerset County Museum at Taunton Castle which augments this series, but extensive reference to this has not been made here and awaits future study and publication. Atkinson (1970, 207) cites Taunton as an important centre for the manufacture of clay pipes, although the evidence suggests that, while it might have been a larger pipemaking centre than Bridgwater or Chard, it does not compare with the size of the industry in Bristol. Further work is required to compile a more complete list of the known Taunton pipes, and in documentary research for the pipemakers.

The pipes illustrated here are arranged to form the basis for a type series of Taunton material. Variations in either form or mark provide the criteria for classification, and sites dealt with in this volume, from which these types were recovered, are indicated in the catalogue entries.

A full catalogue of clay pipes from all the sites discussed in this volume is deposited in the archive.

Catalogue (Figs. 95–98)

1. Small milled bowl with heel stamped GEO/G·AD/AMES; 1660–1670. Pipes by this maker and ascribed to this period have been found in Bristol (Jackson and Price, 1974, 26, 88, No. 2; which is identical to the Taunton example), Marlborough (Atkinson, 1965, 88), Shaftesbury (Atkinson 1970, 211), Salisbury and Donyatt (Atkinson, forthcoming); but it is not yet known where he worked. Canon Street 1977.
2. Small milled bowl with heel stamped I·B; c.1680. Probably *John Burrow* (Oswald, 1975, 192); a pipe, similar to No. 3 below, in the S.C.M. Collection is stamped IB TAUNTON indicating that this maker worked there. Canon Street 1977.
3. Plain bowl with heel stamped IB/TA(UN)/T(ON); c.1680. Kennedy's Yard 1974.
4. Small milled bowl with heel bearing the relief initials I·B; c.1680. Canon Street 1977.
5. Plain bowl with heel stamped IB; c.1680–1700. Possibly James Babb, pipemaker, of High Street, Taunton (S.R.O. Q/SR, 284/10). Kennedy's Yard 1974, Hawke's Yard 1977.
6. Milled bowl with heel stamped IOHN/BVR/ROW; c.1680. Hawke's Yard 1977.
7. Large milled bowl with heel stamped E·C/TAVN/TON; c.1690–1730. This maker also uses Chard as a place-name (nos. 9 & 10, below); Oswald (1975, fig. 10, No. 18) illustrates an example of this pipe. Kennedy's Yard 1974, Hawke's Yard 1977.
8. Large milled bowl (smaller than No. 7) with heel stamped EC/TAVN/TON; c.1690–1730. Kennedy's Yard 1974, Canon Street 1977, Hawke's Yard 1977.
9. Plain bowl fragment with heel stamped E+C/INCH/ARD; c.1690–1730. Benham's Garage 1973–4, Kennedy's Yard 1974, St. James 1974, Hawke's Yard 1977.
10. Milled bowl with heel stamped E+C/INCH/ARD; c.1690–1730. Benham's Garage 1973–4, Kennedy's Yard 1974, Canon Street 1977.
11. Plain bowl with heel stamped N·C; c.1650–1670. This is an unknown maker (Atkinson, 1970, 209), the Shaftesbury examples are very similar to those from Taunton (*ibid.*, fig. 1, No.1) nos. 11 and 12. Hawke's Yard 1977.
12. Large plain bowl with heel stamped N·C, c.1650–1700. Kennedy's Yard 1974, Canon Street 1977, Hawke's Yard 1977.
13. Bowl fragment with heel stamped ID, c.1650–1700. Possibly ?John Doman, tobacco cutter, 1685 (B.L. Add. Ms. 30077, p.24). Kennedy's Yard 1974, Hawke's Yard 1977.
14. Small milled bowl with heel bearing the relief initials ID, c.1670–80. ?John Doman (as for 13). Benham's Garage 1973–4, Canon Street 1977.
15. Large milled bowl with heel stamped A·H/TAVN/TON; c.1700–1720. Atkinson (forthcoming, No. 43/25) refers to an example in S.C.M. Possibly Aaron Hutchins, pipemaker, of East Street, Taunton. Married 1721. Kennedy's Yard 1974, Canon Street 1977, Hawke's Yard 1977.
16. Plain bowl with smaller heel stamped A·H/TAVN/(T)O(N); c.1700–1720. Possibly Aaron Hutchins (as for 15). Kennedy's Yard 1974.
17. Small milled bowl with heel stamped IEF/FRY H/UNT; c.1650–1690. Atkinson (1965, fig. 1, Nos. 18 & 25) describes a similar pipe but see the following works for more details of this maker (Oswald, 1975, 64; Atkinson, 1971, 156–161). Canon Street 1977.
18. Plain bowl fragment with heel stamped —F/— —Y.H/UNT, probably Jeffrey Hunt; c.1650–90. Kennedy's Yard 1974.
19. Small milled bowl with heel stamped IOH/N HV/NT; c.1650–1690. Bristol pipemaker (Jackson and Price, 1974, 47). Canon Street 1977.
20. Small bowl fragment with heel stamped WH; c.1700. Kennedy's Yard 1974, Canon Street 1977.
21. Small bowl with heel stamped W·H, c.1700. The style of this stamp is in some respects similar to nos. 11 & 12 which are stamped N C but the type does not occur in the published pipes from Shaftesbury (Atkinson, 1970, 209). Hawke's Yard 1977.
22. Milled bowl with heel stamped WIL/LIAM/HVNT; c.1700. Benham's Garage 1973–4, Kennedy's Yard 1974, High Street 1974, Hawke's Yard 1977.
23. Small milled bowl with heel stamped —H/HOW/ELL; c.1650–1680. The Howell family were pipemakers at Stoke under Ham (Oswald, 1975, 198). Canon Street 1977.
24. Stem fragment with moulded initials IP on either side of the spur; c.1700. Kennedy's Yard 1974, Canon Street 1977.
25. Small milled pipe with heel stamped EL; c.1631–1652. Jackson and Price (1974, 101–102, Nos. 160 & 164), give several makers. This pipe is probably early in the range belonging to Ed Lewis 1631–52, while No. 26 which is a larger pipe may belong to Ed Lewis II, 1678–1722. This latter pipe was found in a context with other pipes and pottery of c.1700. Hawke's Yard 1977.
26. Bowl fragment with heel stamped EL; c.1678–1722. Kennedy's Yard 1974.
27. Plain milled bowl with heel bearing the initials IP in relief; c.1700. Kennedy's Yard 1974.
28. Stem fragment with heel bearing the initials IP in relief; c.1700. Kennedy's Yard 1974.
29. Large milled bowl with heel stamped IOHN/PARS/ONS; c.1700. Oswald (1975, 192) records a similar pipe in S.C.M. Collections. Canon Street 1977, Hawke's Yard 1977.
30. Heel and stem fragment stamped ·I·/PRAT/TAVN/

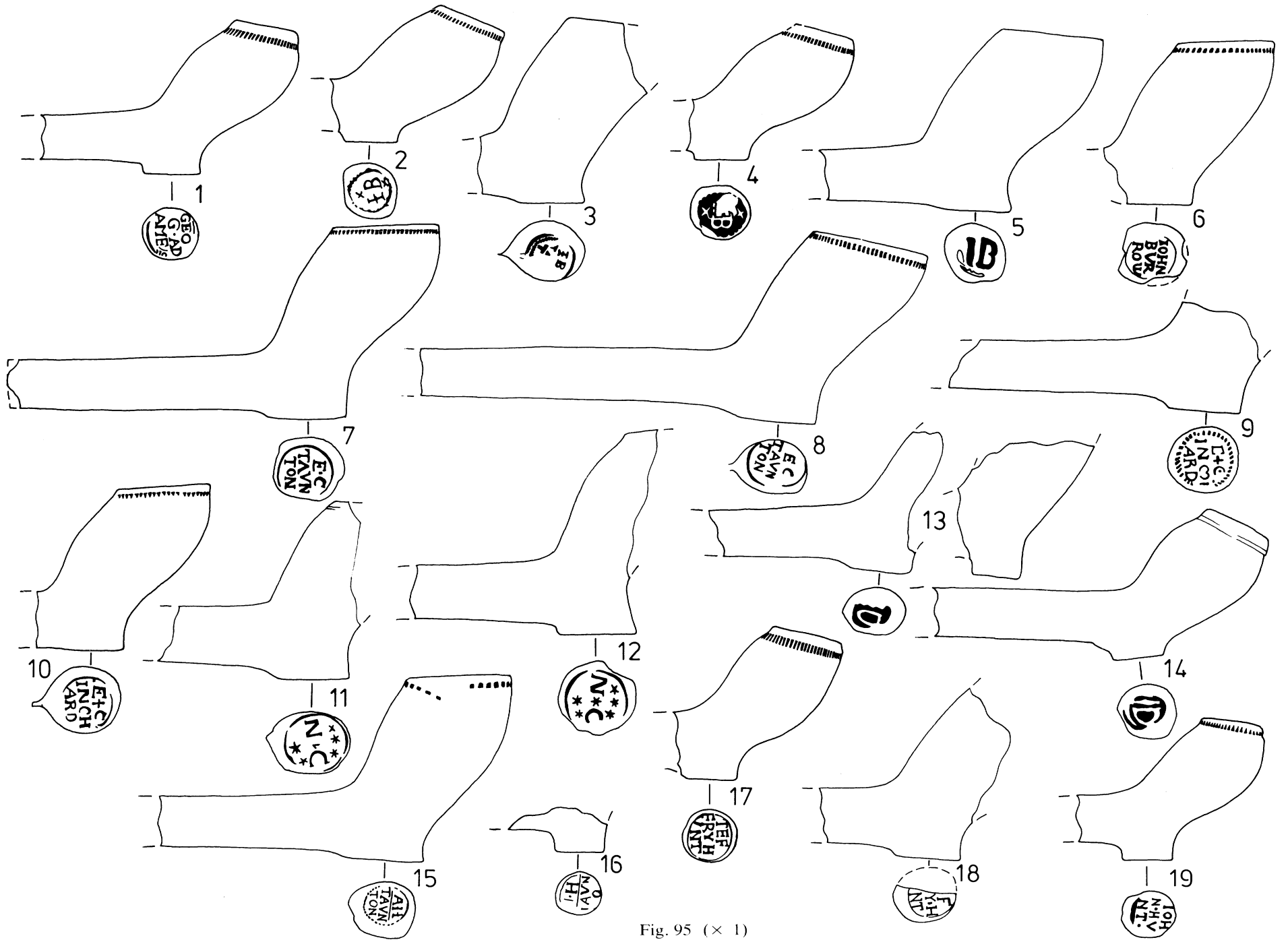


Fig. 95 (x 1)

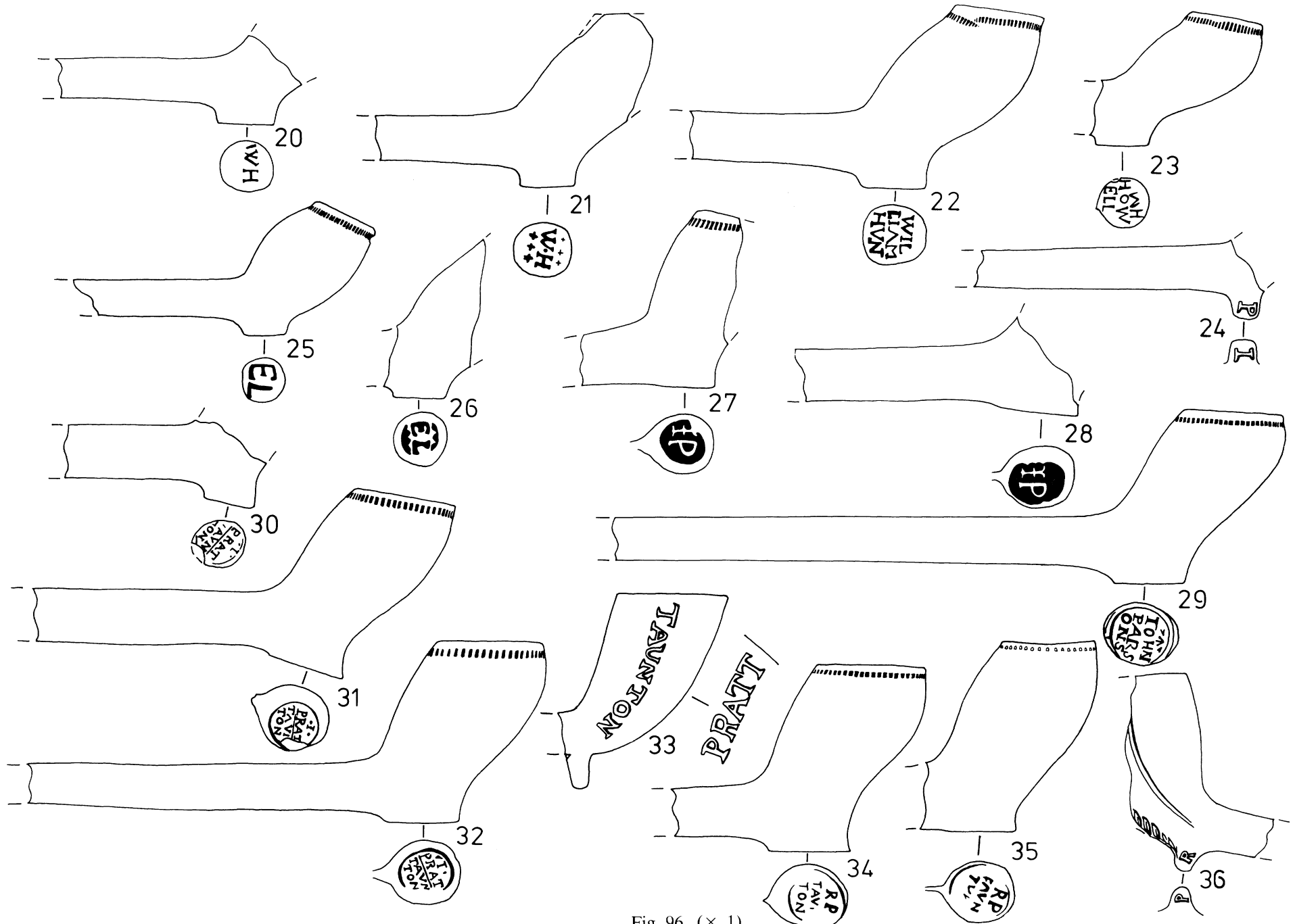


Fig. 96 (x 1)

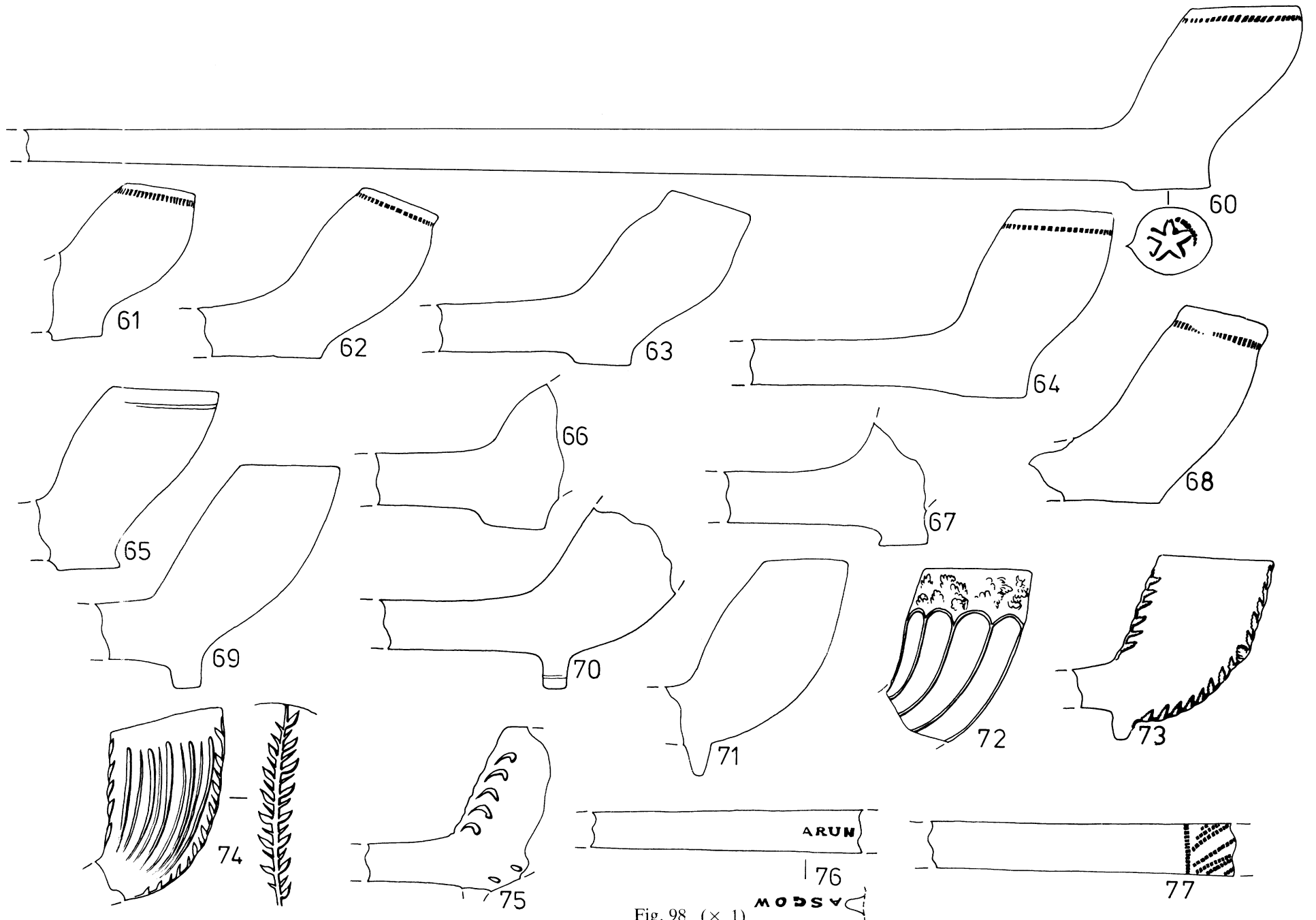


Fig. 98 (x 1)

ARUN
176
MOSSA

77

- TON; c.1700. Oswald (ibid.) records a similar pipe in S.C.M. Collections. Kennedy's Yard 1974.
31. Milled bowl with heel stamped -I-/PRAT/TAVN/TON; c.1700. Kennedy's Yard 1974, St. James 1974, Canon Street 1977.
 32. Milled bowl with heel stamped -I-/PRAT/TAVN/TON; c.1700. Kennedy's Yard 1974, Canon Street 1977, Hawke's Yard 1977.
 33. Bowl with spur and moulded relief makers-mark, PRATT TAUNTON, on either side of the bowl. Probably Isaac Pratt, 1842 (ibid.). Hawke's Yard 1977.
 34. Plain milled bowl with heel stamped RP/TAVN/TON; c.1692? An Indenture made 1st August 1692 records a *William Pyne* (see No. 44) as apprenticed to *Roger Pound* in pipe-making (D/P/tau.ja 13/6/1, Taunton St. James, (Bundles 1-3) in Somerset Record Office). Kennedy's Yard 1974, Canon Street 1977.
 35. Smaller milled bowl with crude stamp on heel, RP/TAVN/TON; c.1692. Hawke's Yard 1977.
 36. Moulded bowl with leaf decoration on spine and the initials R/P in relief on either side of the spur; c.1750-1820. Canon Street 1977.
 37. Plain bowl with moulded initials R/R on either side of the spur, early 18th century (Jackson and Price, 1974, 107, No. 230). High Street 1974.
 38. Small heel fragment, stamped retrograde -S/NVAT/NOT; c.1680-1700. Kennedy's Yard 1974.
 39. Plain milled bowl with heel stamped RICH/ARD/SYM; c.1700. Oswald (1975, 192) records R. Symes at Bridgwater and the report on the excavations at West Quay, Bridgwater illustrates two Syme pipes but these have different stamps to the Taunton examples (Bridgwater and District Archaeological Society, 1977). Kennedy's Yard 1974.
 40. Plain bowl with the initials P/T in relief on either side of the spur; c.1700-1750. Canon Street 1977.
 41. Large milled bowl with heel stamped GE/ORGE/WEB; c.1700. Chard pipemaker (Atkinson, forthcoming). The earliest pipes stamped George Webb may be of c.1650 in date and there are numerous varieties. No. 42 is identical to one found at Donyatt (Atkinson, forthcoming, No. 43/5). Kennedy's Yard 1974, Hawke's Yard 1977.
 42. Heel fragment stamped GE/ORGE/WEB; probably c.1670-1680. Kennedy's Yard 1974, Canon Street 1977, Hawke's Yard 1977.
 43. Bowl fragment with heel stamped GEO/WEBB/IN/CHARD; c.1700. Kennedy's Yard 1974. Benham's Garage 1973-4, High Street 1974. Canon Street 1977. Hawke's Yard 1977.
 44. Bowl fragment with heel stamped PW/TAVN/TON; c.1700. (see note for No. 34, possibly William Pyne, otherwise unknown). Kennedy's Yard 1974.
 45. Heel fragment stamped RW/INTAN/TON; c.1700-1730. Oswald (1975, 59, Fig. 10, No. 17) records a pipe by this maker in S.C.M. Kennedy's Yard 1974, Canon Street 1977.
 46. Milled bowl with heel stamped RW/TAVN/TON; c.1700-1730. Kennedy's Yard 1974, Canon Street 1977, Hawke's Yard 1977.
 47. Large plain bowl with heel stamped WV/TAVN/TON; c.1700-1730. Kennedy's Yard 1974, Hawke's Yard 1977.
 48. Large plain bowl with stamped heel, stamp illegible, probably Prat Taunton; c.1700. Canon Street 1977.
 49. Large milled bowl with heel stamped retrograde TARP/NVAT/NOT; c.1680-1700. Probably Prat Taunton. Kennedy's Yard 1974.
 50. Fragment of large plain bowl with heel and off-centre stamp ———/TON, in relief; c.1700. Canon Street 1977.
 51. Large bowl with heel and obscured stamp; c.1700. Canon Street 1977.
 52. Bowl fragment with heel stamped W N (or A) E W; c.1680-1700. Kennedy's Yard 1974.
 53. Plain milled bowl with heel bearing an illegible stamp, possibly reversed; c.1700. Kennedy's Yard 1974.
 54. Bowl fragment with heel stamped with crude circular design; late-17th or early 18th-century (Atkinson, 1970, 209-10). Kennedy's Yard 1974.
 55. Small plain bowl with heel stamped with a Gauntlet mark; c.1650-1700. Hawke's Yard 1977.
 56. Plain bowl with heel and impressed circular, wheel design; late-17th or early-18th-century. Kennedy's Yard 1974, Hawke's Yard 1977.
 57. Smaller milled bowl with heel with circular wheel design in relief; late-17th or early-18th-century. Canon Street 1977.
 58. Small milled bowl with heel and damaged stamp M—— in relief; c.1650-1700. Hawke's Yard 1977.
 59. Plain bowl with spur and relief circular roundel containing the initial B (?) on the side of the bowl; c.1700-1750. Hawke's Yard 1977.
 60. Plain milled bowl with heel stamped with a pentacle design; c.1700. Hawke's Yard 1977.
 61. Small plain bowl, milled, with unstamped heel; c.1650. Benham's Garage 1973-4, Canon Street 1977, Hawke's Yard 1977.
 62. Plain bowl, milled with unstamped heel; c.1650-1700. Kennedy's Yard 1974.
 63. Plain bowl with unstamped heel; c.1650-1700. Kennedy's Yard 1974, Hawke's Yard 1977.
 64. Plain and milled bowls with unstamped heel; c.1700-1750. Kennedy's Yard 1974, Canon Street 1977, Hawke's Yard 1977.
 65. Plain bowl with heel, unstamped; c.1700. Benham's Garage 1973-4, Kennedy's Yard 1974, St. James 1974, Canon Street 1977, Hawke's Yard 1977.
 66. Small bowl fragment with heel, unstamped; c.1680-1700. Kennedy's Yard 1974. Canon Street 1977, Hawke's Yard 1977.
 67. Bowl fragment with small heel, unstamped; c.1700. Benham's Garage 1973-4, Kennedy's Yard 1974, Canon Street 1977.
 68. Large milled bowl with heel, unstamped; c.1700. The bowl has been trimmed. Canon Street 1977.
 69. Plain bowl with spur, unmarked; c.1700-1750. Benham's Garage 1973-4, Kennedy's Yard 1974, St. James 1974, Hawke's Yard 1977.
 70. Pipe fragment with incised line around the spur; c.1700. Benham's Garage 1973-4, Canon Street 1977.
 71. Plain bowl with spur, unmarked; c.1700. Kennedy's Yard 1974, St. James 1974, Canon Street 1977, Hawke's Yard 1977.
 72. Decorated bowl fragment with spur missing; c.1850. High Street 1974, St. James 1974, Hawke's Yard 1977.
 73. Decorated bowl with spur, moulded leaf design along the spines, c.1850. Hawke's Yard 1977.
 74. Decorated bowl with spur missing, relief lines on bowl and leaf decoration on spines; c.1850. Hawke's Yard 1977.
 75. Fragment of decorated bowl with spur missing, moulded decoration along spines; c.1850. Hawke's Yard 1977.
 76. Fragment of pipe stem stamped ARUN———/(GL)AS-GOW; c.1850-1900. Kennedy's Yard 1974.
 77. Fragment of pipestem with milled decoration, probably c.1700-1730. Oswald (1975, fig. 10, No. 17) illustrates a pipe with similar milling. Hawke's Yard 1977.

Bibliography

- ATKINSON, D.R., 1965 'Clay Tobacco Pipes and Pipemakers of Marlborough', *Wiltshire Archaeological and Natural Hist. Mag.* 60 (1965), 85-95
- ATKINSON, D.R., 1970 'Clay Tobacco Pipes found in Shaftesbury' *Proc. Dorset Natural Hist. and Archaeological Society* xci, 206-15

- ATKINSON, D.R., 1970a 'Clay Tobacco Pipemakers of Salisbury, Wilts' *Wiltshire Archaeological and Natural Hist. Mag.* (1970) 65, 177-189
- ATKINSON, D.R., 1971 'Jeffrey Hunt Pipes' *Wiltshire Archaeological and Natural Hist. Mag.* 66, 156-61
- ATKINSON, D.R., forthcoming 'Clay Tobacco Pipes from Donyatt' in Coleman-Smith and Pearson forthcoming
- Bridgwater and District Archaeological Society, 1977 'West Quay Bridgwater 1973' *Som. Archaeological & Natural Hist. Soc.* 121, 101-105
- JACKSON, R.G., and PRICE, R.H., 1974 *Bristol Clay Pipes* (Bristol City Museum Research Monograph 1, 1974)
- OSWALD, A., 1975 *Clay Tobacco Pipes for the Archaeologist* (British Archaeological Reports 14, 1974)

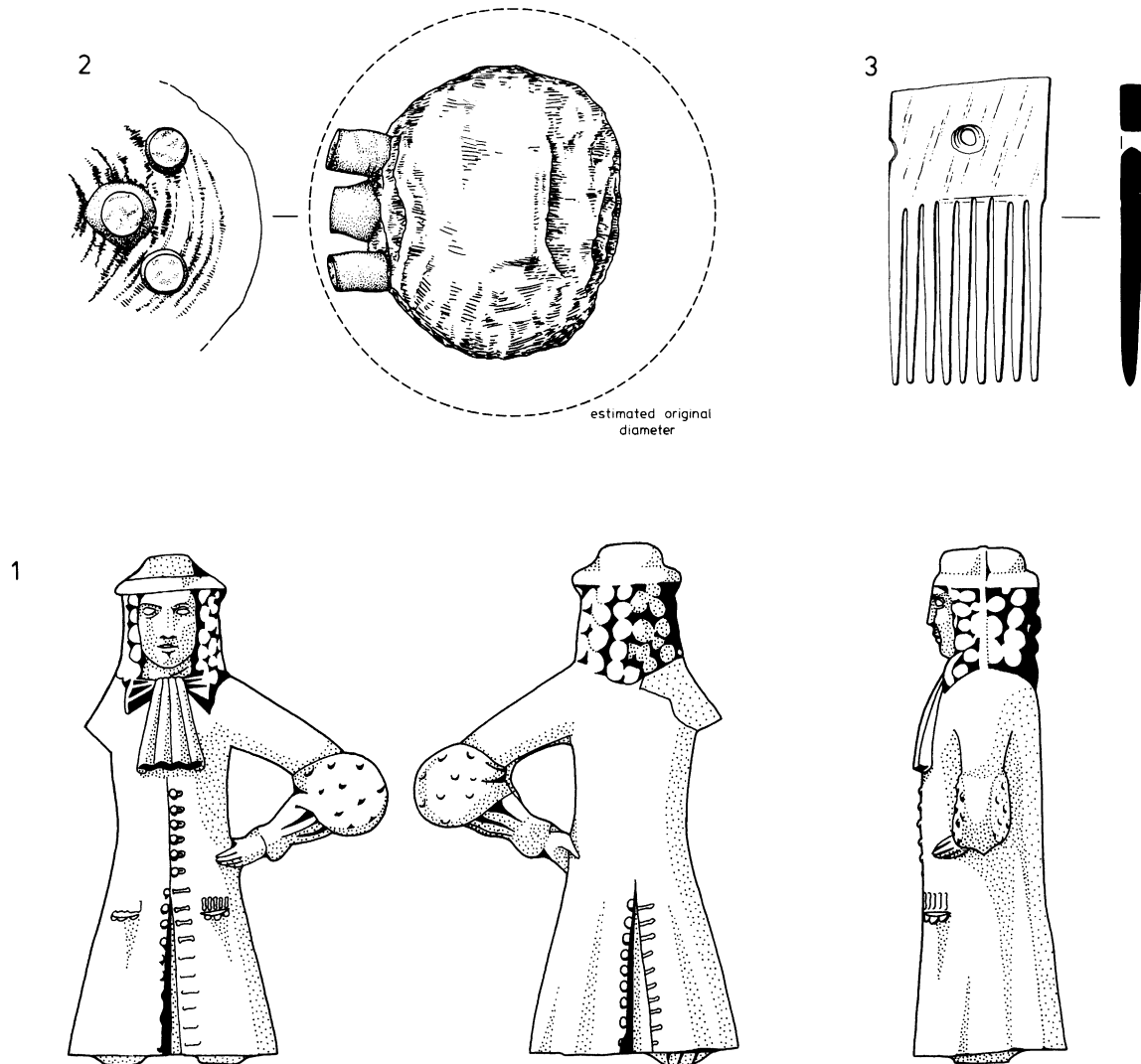


Fig. 99

MISCELLANEOUS OBJECTS (Fig. 99)

- 1) Pipe-clay figurine made in a mould; right arm and legs broken off. On stylistic grounds this piece should belong to the decade 1685-95. Similar figures were produced during the 17th century (Platt and Coleman-Smith, 1975, 275-6 & Pl.126), and may have some connection with the manufacture of clay tobacco pipes. Paul Street 1972.
Platt, C., and Coleman-Smith, R., 1975. *Excavations in Medieval Southampton 1953-1969. Volume 2: The Finds.*
- 2) Core of a wooden ball into which is inserted three lead bias weights; the remains of a ball from a game of bowls. Mid-18th-century, BIII.3 Kennedy's Yard 1974.
- 3) Bone comb pierced with rivet holes to permit the attachment of additional strips of bone or wood to make up the handle. 13th-century, (3) Benham's Garage 1978.